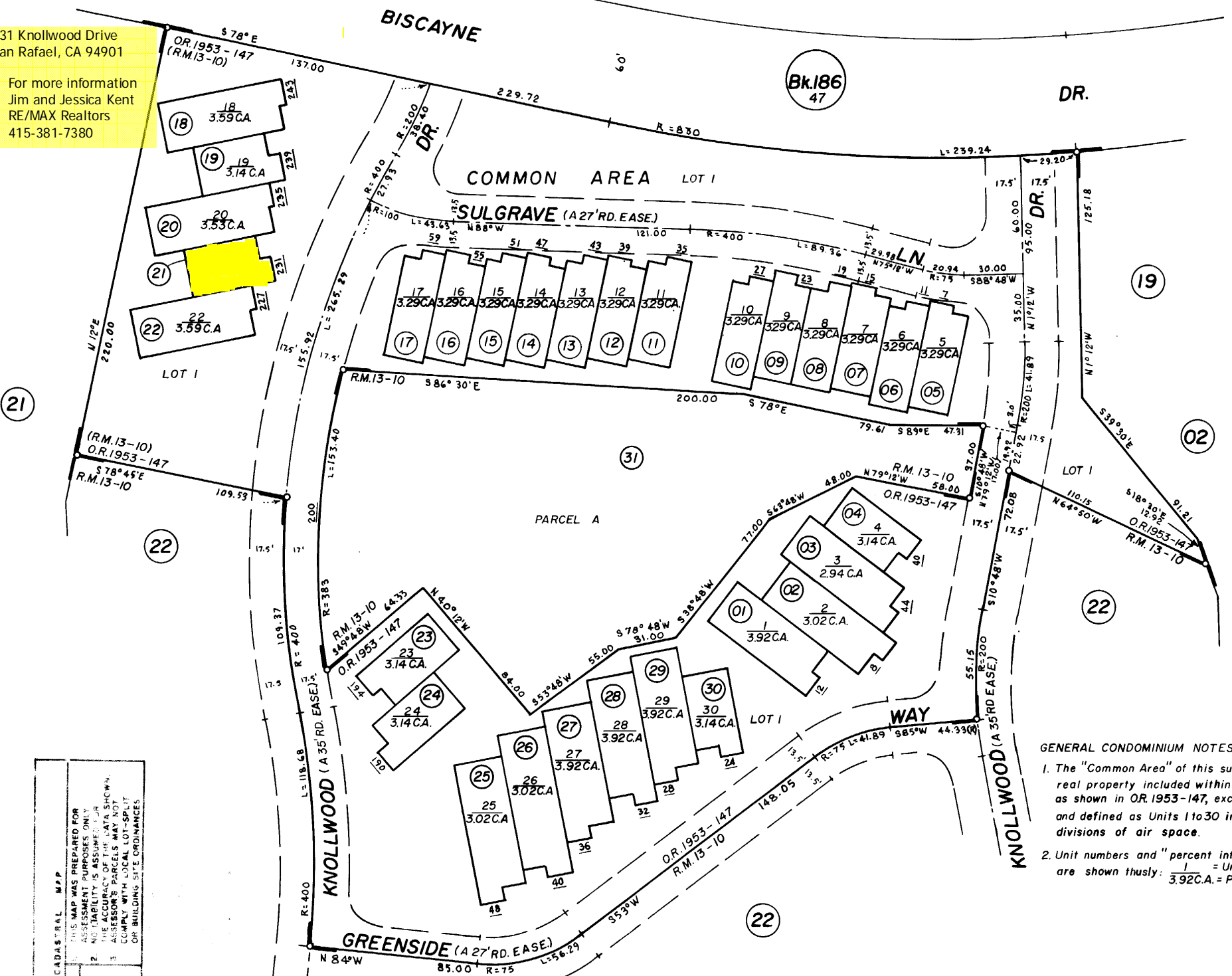
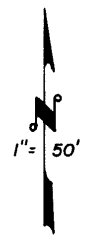


231 Knollwood Drive
San Rafael, CA 94901

For more information
Jim and Jessica Kent
RE/MAX Realtors
415-381-7380

Tax Area Code 184-20
8-000



GENERAL CONDOMINIUM NOTES

1. The "Common Area" of this subdivision is the land and real property included within the lines of Lot 1 only, as shown in O.R. 1953-147, except those portions shown and defined as Units 1 to 30 inclusive, which are subdivisions of air space.
2. Unit numbers and "percent interest" as Tenants in Common are shown thusly: $\frac{1}{3.92C.A.}$ = Unit numbers
 $\frac{1}{3.92C.A.}$ = Percent interest in common area

Peacock Gap Unit 6, "A Condominium," R.M. Bk. 13, Pg. 10
Lot 1 & Pcl. "A" Peacock Gap Unit 6, "A Condominium," O.R. Bk. 1953, Pg. 147

NOTE - Assessor's Block Numbers Shown in Ellipses.
Assessor's Parcel Numbers Shown in Circles.

CITY OF SAN RAFAEL
Assessor's Map Bk. 184 - Pg. 20
County of Marin, Calif.

CADASTRAL MAP	THIS MAP WAS PREPARED FOR ASSESSMENT PURPOSES ONLY.
REVISED	2. NO LIABILITY IS ASSUMED FOR THE ACCURACY OF THE DATA SHOWN.
	3. ASSESSOR'S PARCELS MAY NOT COMPLY WITH LOCAL LOT-SPLIT OR BUILDING SITE ORDINANCES.